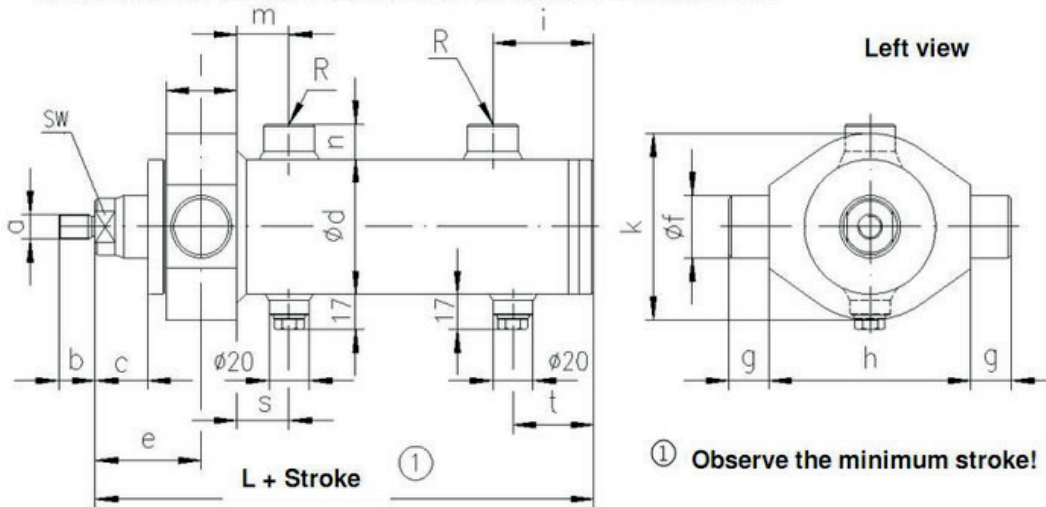


Double-Action Damping Cylinders 210 bar

Series: HZD4 // Model: E

Double-Action Damping Cylinders - 210 bar Series: HZD4 Model: E

Position of the P5 and P6 vents and the P7 and P8 connections



Piston ϕ	Rod ϕ	L	Min. str.	e	c	n	ϕd	m	i	s	t	k	g	h	ϕf_{e8}	l	SW	a	b	R
40	25	190	45	31	21	22	52	45	53	20	23	70	18	80	25	30	19	M16x1.5	16	R 3/8"
50	35	215	50	39	22	22	65	40	62	20	27	80	20	90	30	35	27	M22x1.5	22	R 3/8"
63	45	252	55	45	26	22	78	48	72	20	27	100	20	115	35	40	36	M28x1.5	28	R 3/8"
80	50	261	60	50	30	22	100	56	72	20	30	125	25	140	40	45	41	M35x1.5	35	R 1/2"
100	70	286	65	60	35	22	120	61	77	20	30	150	30	170	50	55	60	M45x1.5	45	R 3/4"
125	90	325	70	75	37	22	150	70	91	20	35	175	35	190	65	65	75	M58x1.5	58	R 3/4"